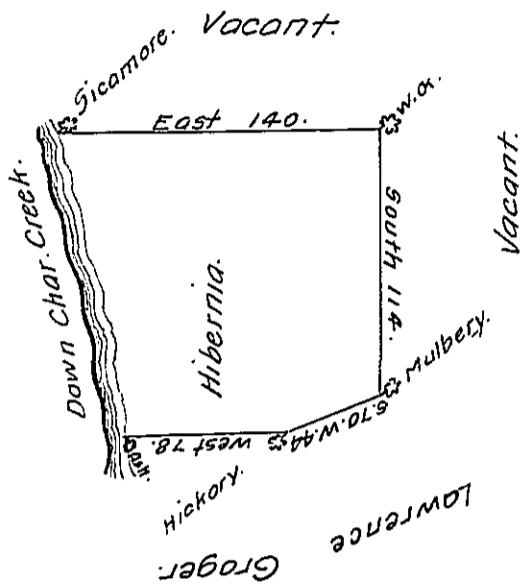


Courses down Char. Cr. }
 Beg. at an Ash and Run. }
 N. 3° W. 91 f. }
 N. 22° W. 41 f. }
 to a Sycamore. }



23

In pursuance of an Order No. 3416, dated 13th June, 1769 the above is a draught of a tract of Land call'd: Hibernia situated on the west side Monongahela, - containing 93 .. 0 .. 25 acres with the usual allowance of 6 f. C. for Roads, highways &c. Survey'd for Thomas Stuart 27th October, 1769. by

To John Lukens, Esq^r:

James Hendricks. —

IN TESTIMONY that the above is a copy of the original remaining on file in the Department of Internal Affairs of Pennsylvania, made conformably to an Act of Assembly approved the 16th day of February, 1833, I have hereunto set my Hand and caused the Seal of said Department to be affixed at Harrisburg, this .. second .. day of .. February, .. 1911.

Nevry Houck
 Secretary of Internal Affairs.